



Fonda Speedway 2024 Amsterdam Truck Center Modified Specifications

The 2024 Amsterdam Truck Center Modified division at Fonda Speedway will work off the general guidelines of the Bob Hilbert Sportswear Short Track Super Series (STSS) Fueled By Sunoco. Visit www.shorttracksuperseries.com under "Series Info" to view complete regulations.

Engines:

Big- and small-block engine combinations are permitted at Fonda Speedway. Steel-block only (exceptions can be made for approved W-16, LS and spec combinations). No small-block engine may exceed 454 cubic inches. No big-block engine may exceed 477 cubic inches. Must be (single) carbureted; no fuel injection.

- Big- and Small-Block engines: 2,400 lbs.
- Wegner LS 427 Weekend Warrior Spec: 2,350 lbs. (must conform to Wegner Automotive spec sheet)
- CT 525: 2,300 lbs.
- PA/NJ/DIRTcar Spec Small-Block – open carburetor, no rev limiter (gasoline): 2,275 lbs.
- W-16: 2,250 lbs.

All weights are track scale pounds, with driver, post-race. Weights are subject to change by Fonda Speedway officials to maintain competitive balance.

Tires:

Right-Rear: American Racer SD 56 compound ONLY (50 compound tires will have a burn-off period)

Left-Rear: American Racer SD 48 compound ONLY

Right-Front: American Racer SD 48 compound ONLY

Left-Front: Any American Racer Modified tire

Bodies:

Traditional windows only. No sail panels for weekly racing.

Door heights are as follows: maximum height of 41 inches on the left side and 40 inches on the right when measured 60 inches forward from the centerline of the rear axle.

Left-Side Measurement Points:

16 inches forward from centerline of rear axle: 45 inches maximum, 37 inches minimum

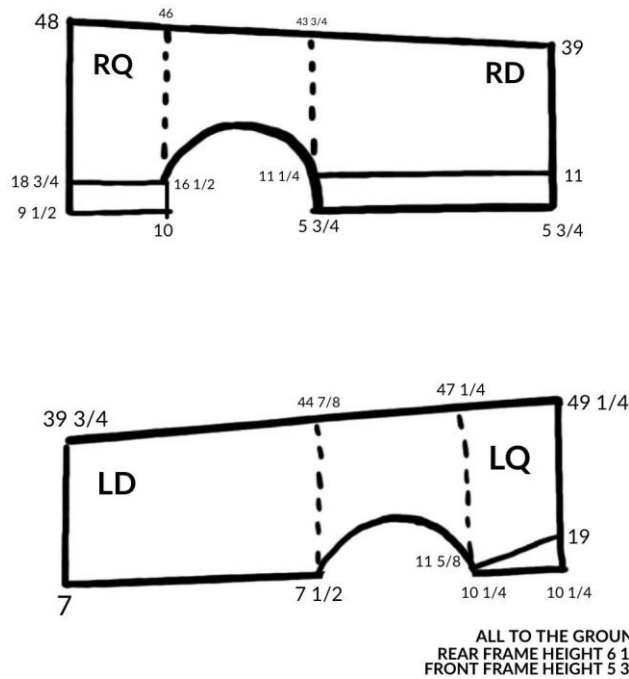
60 inches forward from centerline of rear axle: 41 inches maximum, 36 inches minimum

Right-Side Measurement Points:

16 inches forward from centerline of rear axle: 44 inches maximum, 36 inches minimum
60 inches forward from centerline of rear axle: 40 inches maximum, 35 inches minimum

There cannot be more than a one-inch difference from left door to right door in split when measured from the ground.

Please reference the diagram below for STSS door dimensions:



The maximum combined length of door and quarter together, front to back, is as follows:

- *Left Side:* 11 feet, 4.5 inches on the top of the combined door/quarter; 11 feet, 5 inches on the bottom of the combined door/quarter
- *Right Side:* 11 feet, 3 inches on both the top and bottom of the combined door/quarter

Rear spoiler rule maximum height: 50 inches – must be even from left to right. Minimum ground clearance of 6 inches in door skirting and 8-inch minimum for rear quarter-panel skirting.

Maximum body width, when measured at any point along the body line from front-to-back will be a maximum of 68 inches and minimum of 64 inches.

Aluminum surrounding fuel cell is optional.

*All other measurements are to mirror the standard for Northeast dirt Modified racing. **Fonda Speedway officials have final decision on all discrepancies.***

Fuel:

Gasoline only. Sunoco Race Fuels the preferred fuels of Fonda Speedway. Sunoco Standard

(110 octane), Supreme (112 octane), HCR (114 octane), DXP (116 octane), SR18 (118 octane) or equivalent ONLY.

Transponders:

AMB Transponders are REQUIRED for all Short Track Super Series events.

Transponder Mounting: Transponders must be mounted on the right side no less than 24 inches behind the rear axle centerline at a height of 12 to 18 inches from the ground. For optimum function, the transponder should be mounted as close to the ground as possible. Transponder should be mounted with no obstruction between the transponder and the ground.

Scoring:

The decisions of scorers at Fonda Speedway events are final. Race teams have 10 minutes following the completion of an event to question the order of finish. Teams should contact the host track pit steward or Fonda Speedway official with their comment/question. Finishes will be posted on each speedway lineup board shortly after the checkered waves at each event.

One-Way Radios:

One-way radios are mandatory. Frequency is 454.000. NO two-way communication between driver and crew.

Two-Way Radio Communication:

Two-way communication between driver and crew is strictly prohibited at all Fonda Speedway events. Crews may not utilize radio communication with their driver. One-way communication from the Race Director only.

Contingency Decals:

To be eligible for payout and/or point fund monies, all cars ***must*** be outfitted with the following decals: Sunoco Race Fuels and American Racer. Decals of any competing brands must be concealed.

ALL RULES ARE SUBJECT TO CHANGE AT ANY TIME BY MANAGEMENT OF FONDA SPEEDWAY TO ENSURE COMPETITIVE BALANCE. ALL OFFICIALS' DECISIONS ARE FINAL!